

Not Cartridge Used **HIPRO-V**



T +82. 2. 2208. 0905 | E globalsales@daejumedi.co.kr | W www.infilux.co.kr
5F, Haus.D Sejong Tower, 26, Seongsu-Il-ro 10 gil, Seongdong-gu, Seoul, Korea

CONTENTS



I

Technology Evolution

II

HIFU

III

HIPRO - V

IV

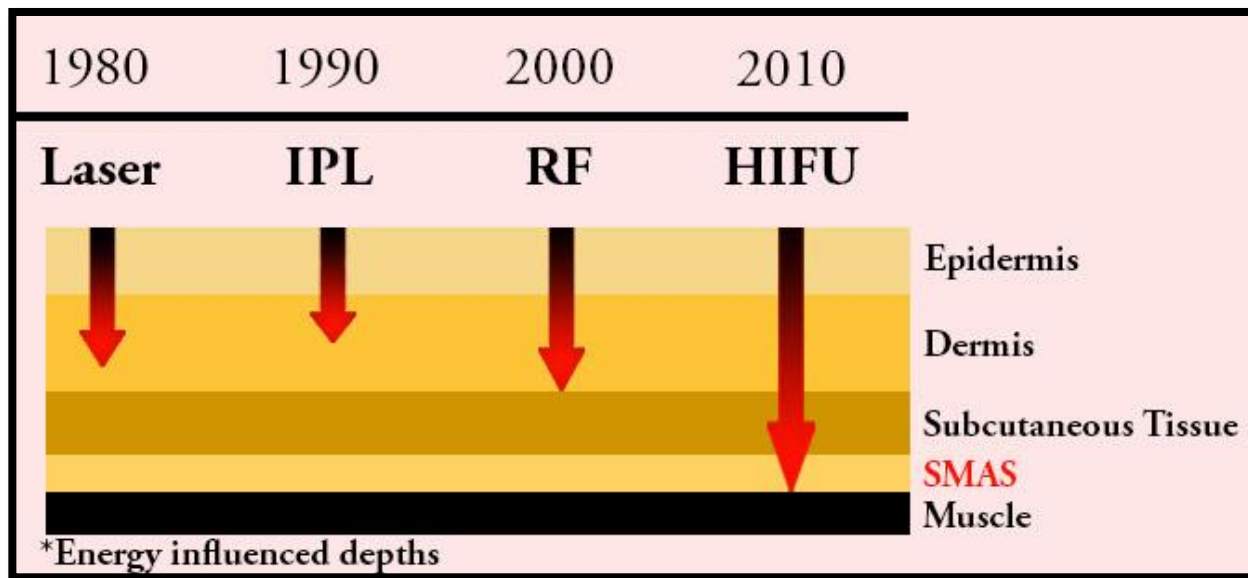
VIDEO

V

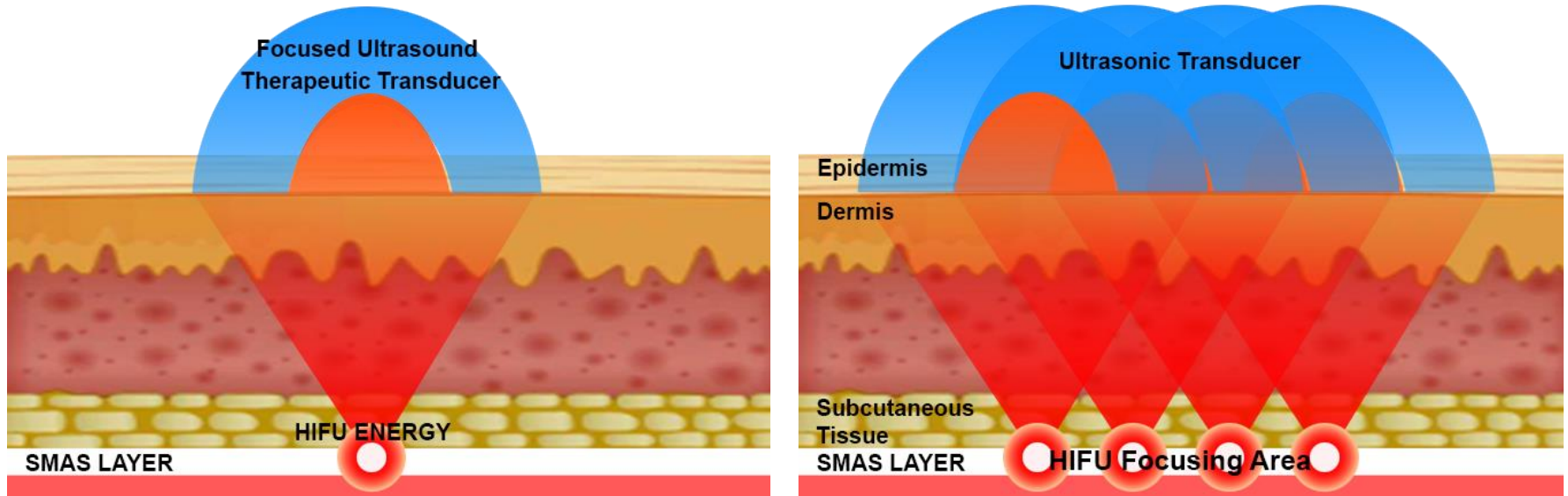
BEFORE / AFTER PICTURES

I

Technology Evolution



Technology of HIFU



Beginning of 2010, HIFU is launched and it is regarded as first device which can deliver thermal energy to SMAS which is actual cause of aging process.



Differences

Laser & IPL	Advantages	<ul style="list-style-type: none"> - Selectivity : Energy is only applied to Hemoglobin, Melanin, and Water. - Safety : Safety has been proved for 30 years through its theoretical background and technology.
	Disadvantages	<ul style="list-style-type: none"> - It is hard to apply to dark skin and deliver the energy into deep dermis & subcutaneous fat.
R F (Radio frequency)	Advantages	<ul style="list-style-type: none"> - It can deliver the energy into deep dermis. - It generates stable and high thermal energy.
	Disadvantages	<ul style="list-style-type: none"> - Non selectivity. - It is hard to transfer the energy into SMAS layer.
Fractional Laser	Advantages	<ul style="list-style-type: none"> - Partial, selective treatment is possible and shortening downtime. - Effective for various scar.
	Disadvantages	<ul style="list-style-type: none"> - The side effects, such as PIH or erythematic happens. - It is hard to deliver the energy into deep dermis.
HIFU	Advantages	<ul style="list-style-type: none"> - Treatment up to SMAS layer creating 'Focal Zone' - No damage to the Epidermis and without downtime
	Disadvantages	<ul style="list-style-type: none"> - Need knowledge on nerve and blood systems - Need consumables like HIFU cartridge

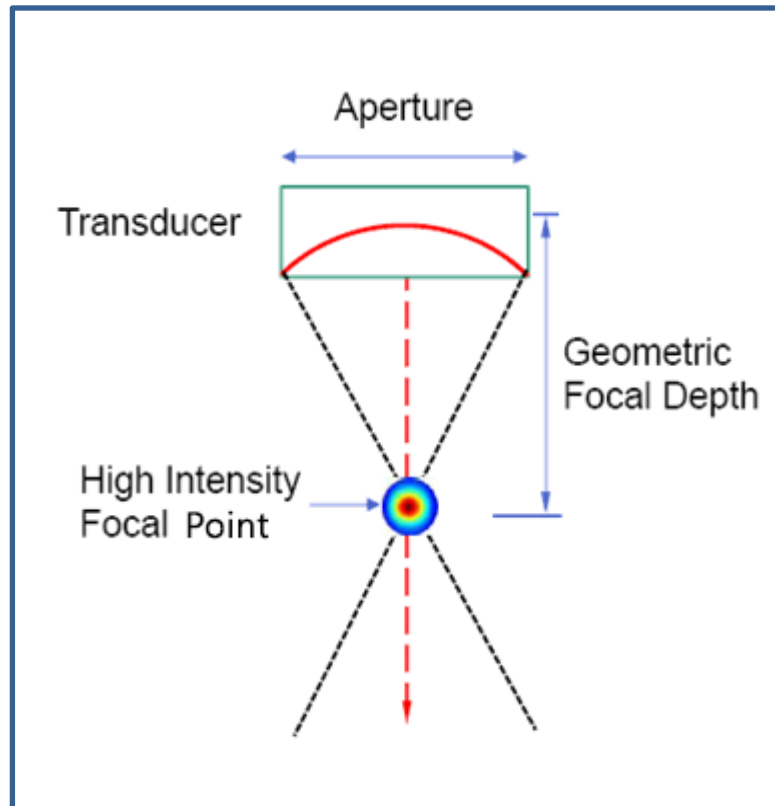


II

HIFU



HIFU (High Intensity Focused Ultrasound)



High Intensity Focused Ultrasonic Surgical unit, HIFU

- HIFU is an equipment to treat various cancers like liver cancer, uterine cancer, and breast cancer through thermal energy which created in the focal point of supersonic wave collected through ultrasound transducer.



Medical Equipment Utilizing HIFU

Type ①



Saisei Mirai Clinics

GcMAF immunotherapy and complementary treatments at Saisei Mirai

Japanese HIFU Cancer Operational Equipment

Type ②

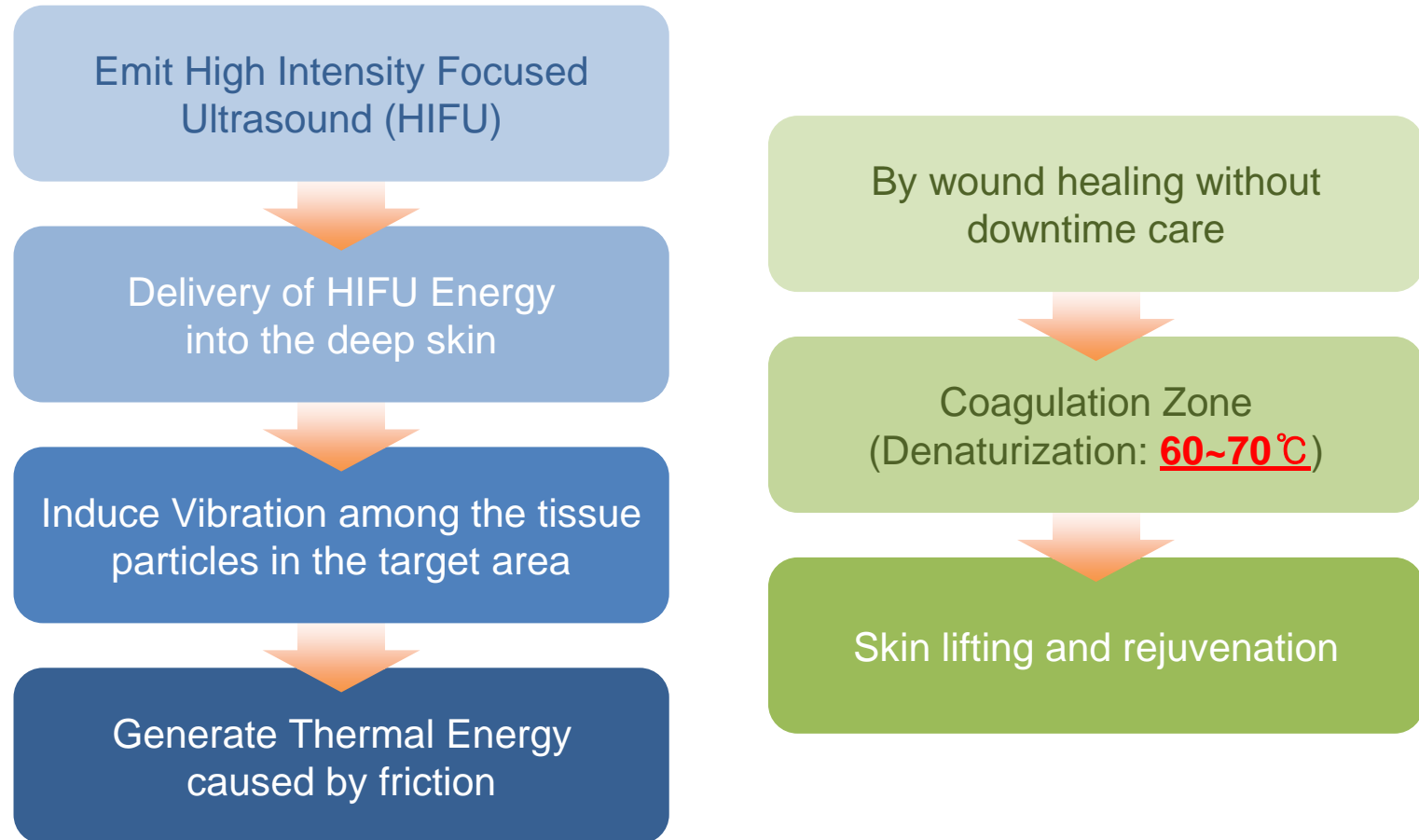


American Prostate Cancer,
Uterus Cancer HIFU Operational Equipment

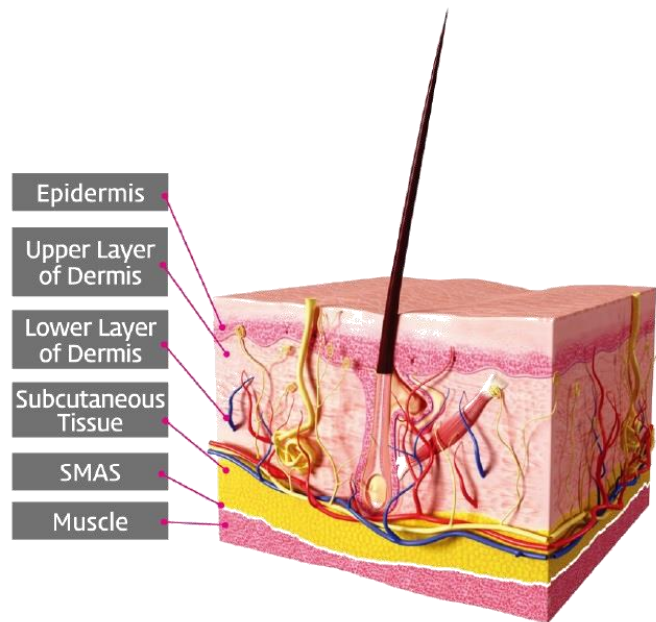


Global Leader of Aesthetic Medical Instruments
Beauty devices market leader with the economical manufacturing for customers' satisfaction
www.infilux.co.kr

Principles of HIFU



Principles of HIFU



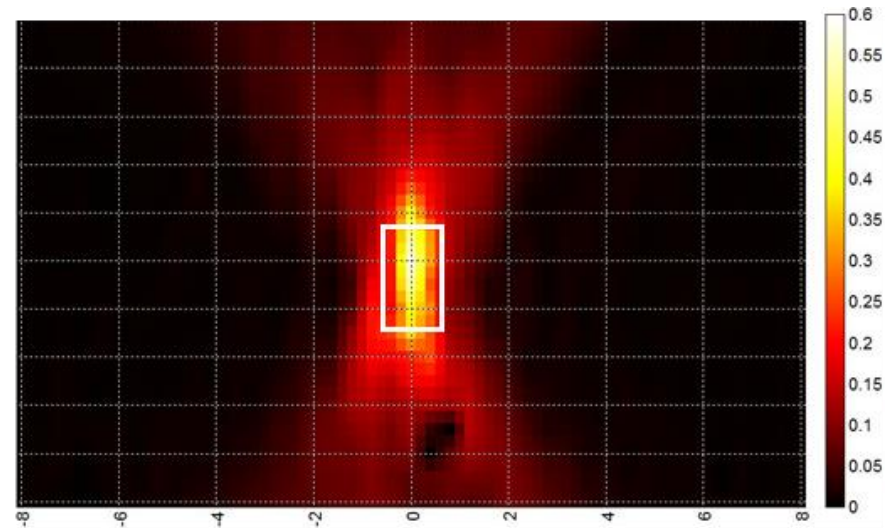
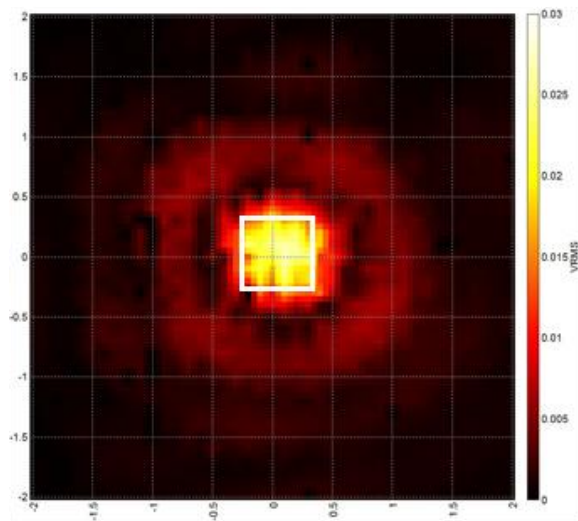
SMAS [Superficial Muscular Aponeurotic System] is the area of between just below the dermis and the top portion of the muscle layer

In aging process, this muscle layer could make the reason of wrinkle and loosen skin



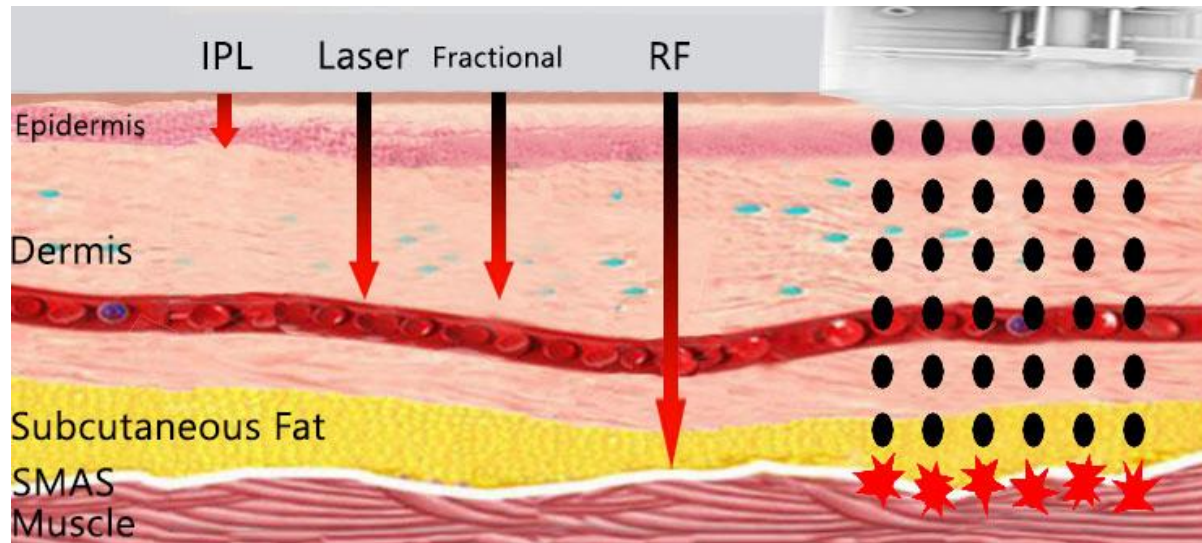
III

HIPRO-V



▪ Image of MF9(2MHz, 9.0 mm) focused ultrasound beam showing high power-density in focal region

The strength of HIPRO-V



- HIFU energy penetrates and make thermal coagulation to SMAS area, facial, deep dermis and Subcutaneous fibrous tissue.
- Natural wound healing process creates new elastic collagen, hence resulting in lift and tighten loose skin for rejuvenation over time.



The strength of HIPRO-V (Not using each cartridge)



Face / Body Contouring

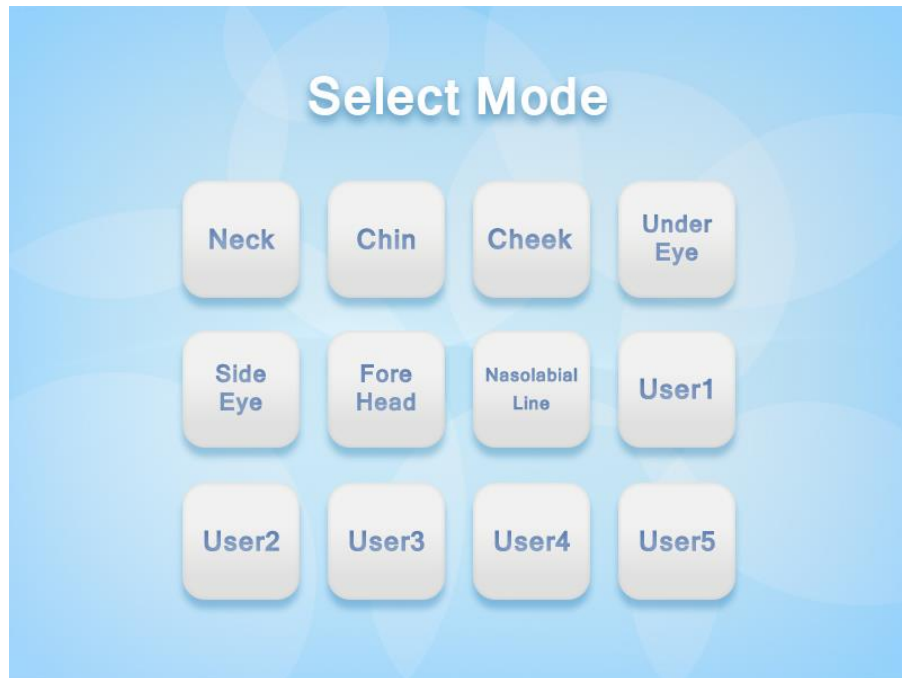
- Instead of each energy cartridge, only one handpiece is used for face & body contouring.
- The handpiece is the alternative of all cartridges with the shot number of 10,000,000.
- Through GUI, the depths of energy and output energy can be controlled by the operator.
- The handpiece delivers its energy strictly on the targeted area with on average **65 Celsius degrees** on the coagulation zone.



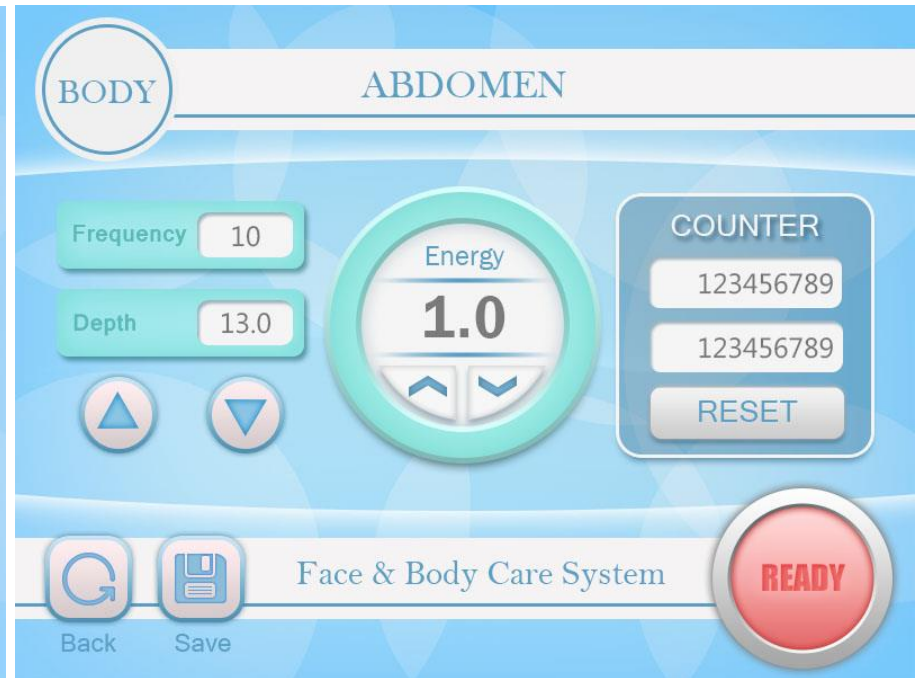
Configuration of HIPRO-V



User Friendly Interface



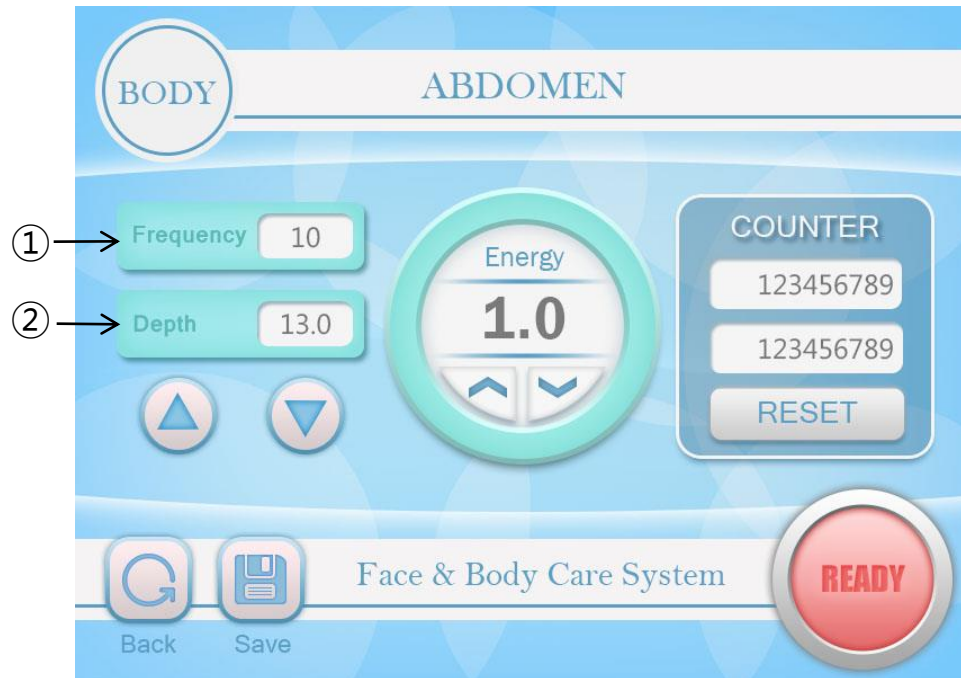
• Select Mode Screen



• Main Screen



User Friendly Interface



- ① Frequency : You can adjust the shot speed
- ② Depth : Make control the depths of energy and output energy
(Face : 1.5mm to 4.5mm / Body : 6.0mm to 13.0mm)



Strong Point of HIPRO-V

1

Only handpiece type Containing 10,000,000 shots
(not cartridge used)

2

All depths & Energy are adjusted,
and controlled by GUI only.

3

Collagen remodeling and SMAS contraction
in single treatment

4

Reasonable price of unit and
its consumables

5

More precise and longer treatment term



Expectation in Selection of HIPRO-V

Reasonable equipment and its consumable price

Application of reasonable
treatment fee

The total shots contain 10,000,000

Increase of patients

Increase of
satisfaction on cost
effectiveness

Differentiation with
other hospitals

Satisfactory
clinical result



Specification (HIPRO-V, compact type)



Energy Source	HIFU (High Intensity Focused Ultrasound)
Energy output	0.1J~2.0J/cm ²
Warranty	4,000,000 shots(20,000 shots/person) or within 1 year whichever comes earlier, would be expired. One handpiece: 200 patients treated for face lifting and tightening with body slimming
Electrical	AC 100-230V, 50/60Hz
Frequency	5 ~ 10 [Hz]
Depth for Face	1.5 ~ 4.5 Step to 0.5 [mm]
Depth for Body	6.0~ 13.0 Step to 1.0 [mm]
Dimension	350X410X290mm (W x L x H)
Weight	18Kg



IV

VIDEO



**If you click this pictures, You can see the hipro-v video. (YOUTUBE POP-UP)

V

BEFORE / AFTER PICTURES



BEFORE / AFTER PICTURES

- Before



- After 1-2 months



► **PARAMETER**

Energy :

3mm (1.0J) / 4.5mm (1.2J)



BEFORE / AFTER PICTURES

- Before



- After 1-2 months



► **PARAMETER**

Energy :

3mm (1.5J) / 4.5mm (1.2J)



Global Leader of Aesthetic Medical Instruments

Beauty devices market leader with the economical manufacturing for customers' satisfaction

www.infilux.co.kr

BEFORE / AFTER PICTURES

- Before



- After 1-2 months



► **PARAMETER**

Energy :

7mm (1.5J) / 13mm (1.6J)



BEFORE / AFTER PICTURES

- Before



- After 1-2 months



▶ PARAMETER

Energy :

8mm (1.6J) / 12mm (1.2J)



THANK YOU

We will be your successful Business Partner!!!

If you have any questions, Please don't hesitate to contact us.

T +82. 2. 2208. 0905 | **E** globalsales@daejumedi.co.kr | **W** www.infilux.co.kr

5F, Haus.D Sejong Tower, 26, Seongsu-Il-ro 10 gil, Seongdong-gu, Seoul, Korea